

# University at Buffalo's Migration to Brightspace and Legacy LMS Archiving

Hear how UB migrated almost 13,000  
courses to Brightspace with ease and  
archived 50,000 courses

---

July 2024

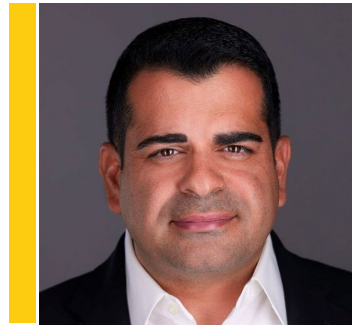


# WHO WE ARE



**DON TRAINOR**

Director of Learning Management  
Systems, University at Buffalo



**SAM YAGHOUBI**

SVP of Partnerships at  
K16 Solutions





# AGENDA

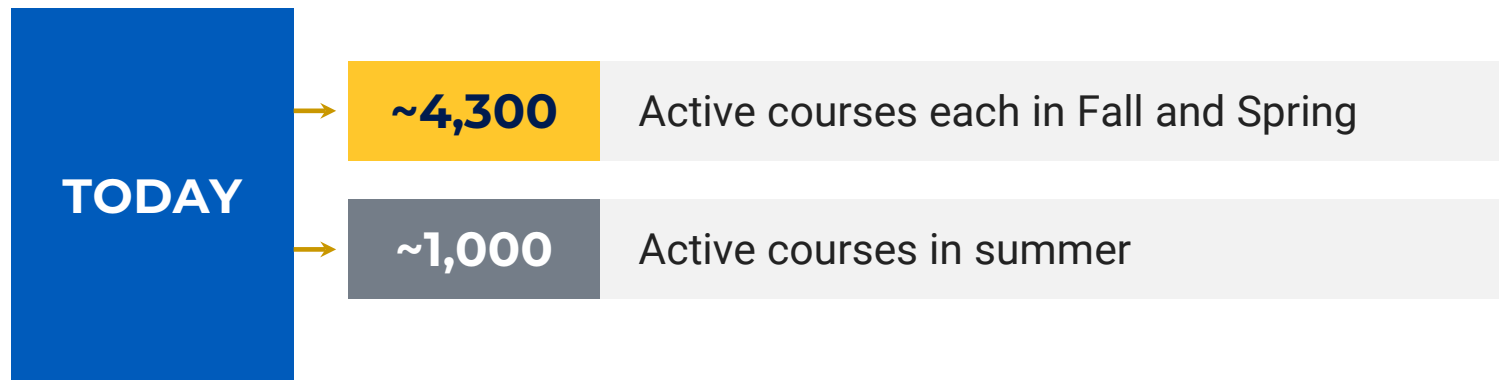
1. About University at Buffalo's Overview and LMS History
2. Critical Timeline
3. Leveraging K16 Solutions – Migration & Archiving
4. Support
5. Lessons Learned

UB

# UNIVERSITY AT BUFFALO

- Largest and most comprehensive university in the SUNY system
- 2,641 Faculty, 2,821 Staff
- 19,331 Undergraduate students, 11,121 Graduate students

## UB LEARNS



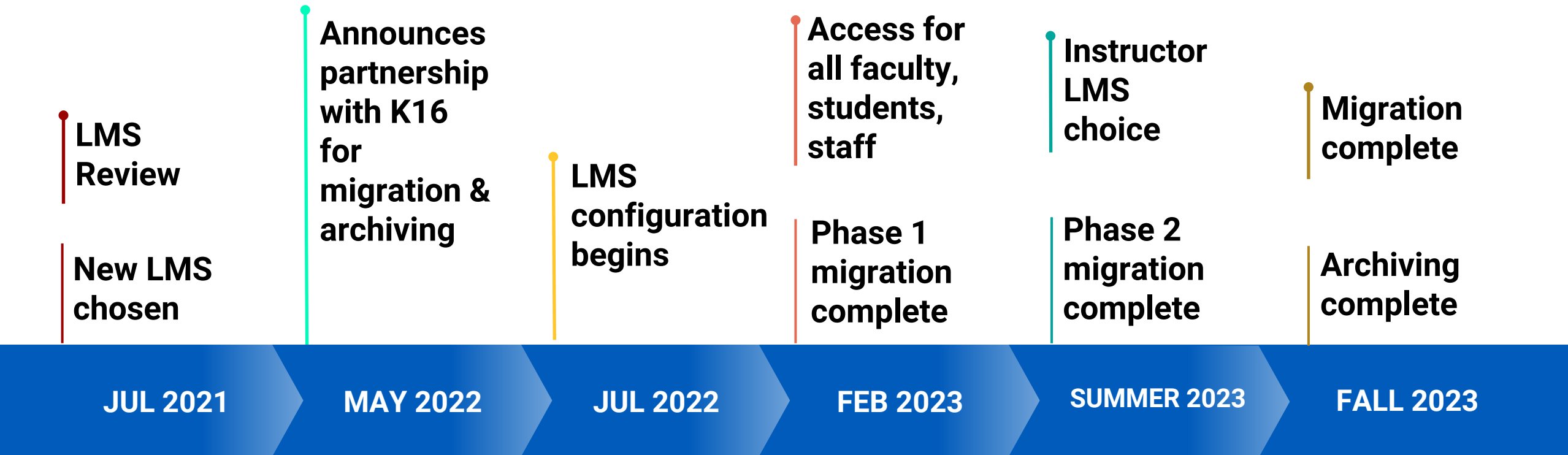
## UB Learns

Spent twenty-two years on Blackboard Learn which ended in December 2023. It uses PeopleSoft as its SIS.

### ADMINISTRATIVE TEAM:

- Mark Woodard (22 years)
- Gary Koteras (8 years)
- Don Trainor (5 years)

# TIMELINE OVERVIEW



Blackboard®



D2L  
BRIGHTSPACE



# UB & K16 SOLUTIONS

## CHOOSING: K16 SOLUTIONS

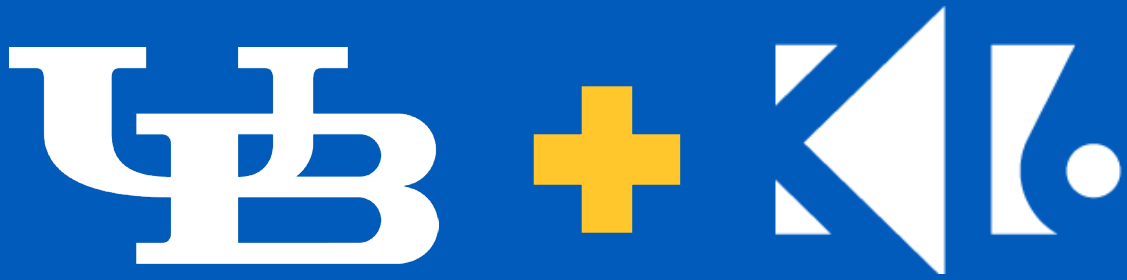
- Senior administration decided early in the process to use a third-party vendor to migrate and archive all available courses

## PLANNING: LEGACY LMS & DATA MANAGEMENT

- Long-term UB Learns Data Management Policy in place
- Courses are kept on the LMS for one year after the end of the semester

## STARTING: MIGRATION & ARCHIVING

- Migrated and archiving **13,000 courses** (Spring 2022 though Summer 2023)



# UB & K16 Solutions

## MIGRATION

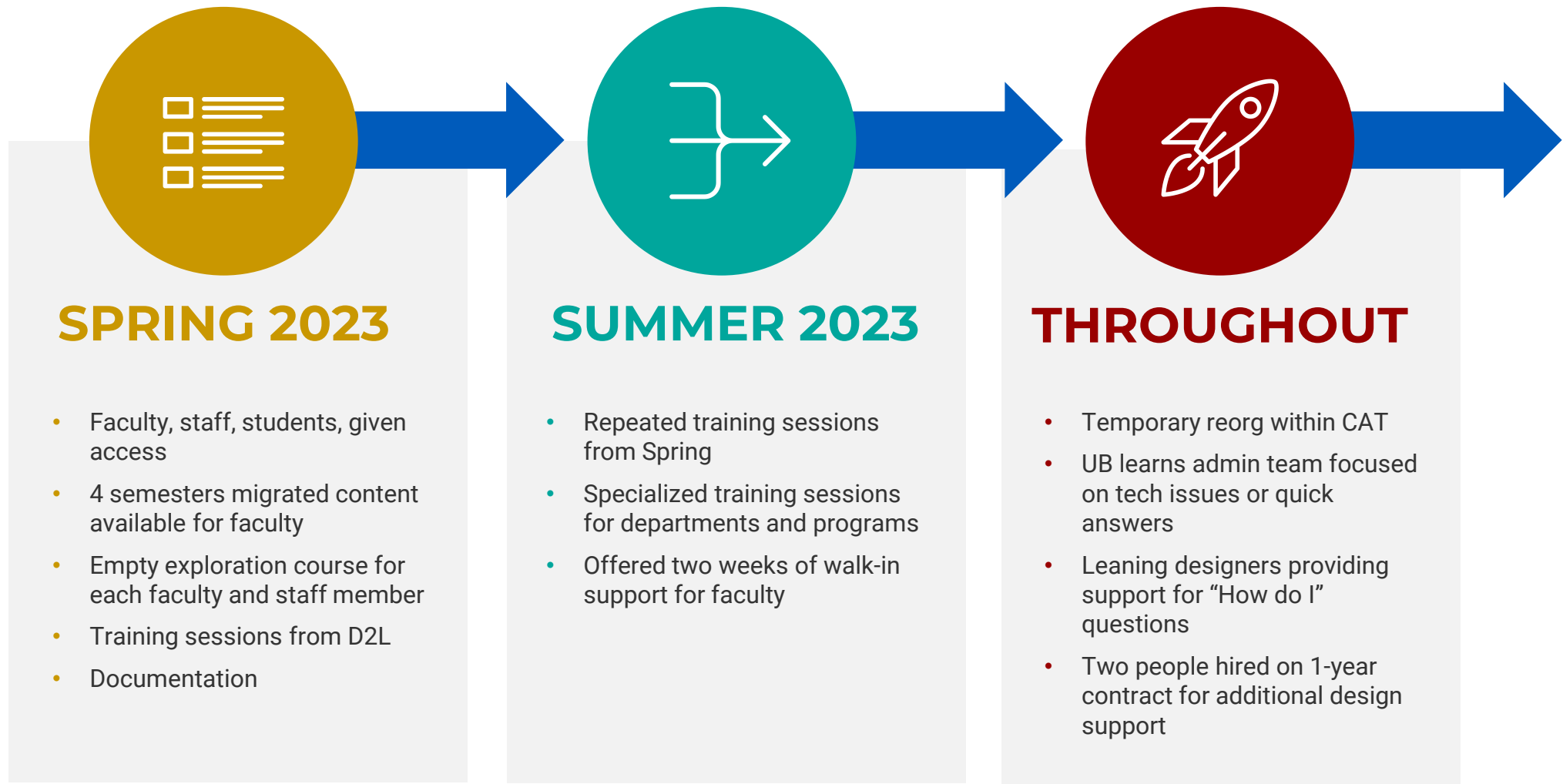
- Worked with K16 on three iterations of migration scripts
- Allowed UB to customize content converted to Brightspace
- Placeholder pages for tools not available in Brightspace
- Content Structure
- 3 Phases (Feb, June, Sep)
- Instructors copy migrated content to live course shells

## ARCHIVING

- Signed off after first iteration
- Currently underway
- Archived data remains accessible to Brightspace
- Enrollment info, discussions, quizzes, assignments, etc.
- Only LMS administrators have access



# SUPPORT



# LESSONS LEARNED

**1**

**Keep stakeholders up to date, but don't go overboard**

**2**

**Provide support staff with plenty of time to learn the new LMS**

**3**

**Customer service is even more important than ever**

**4**

**Stick to your access plan as closely as possible**

**5**

**Provide stress-free practice course shells**

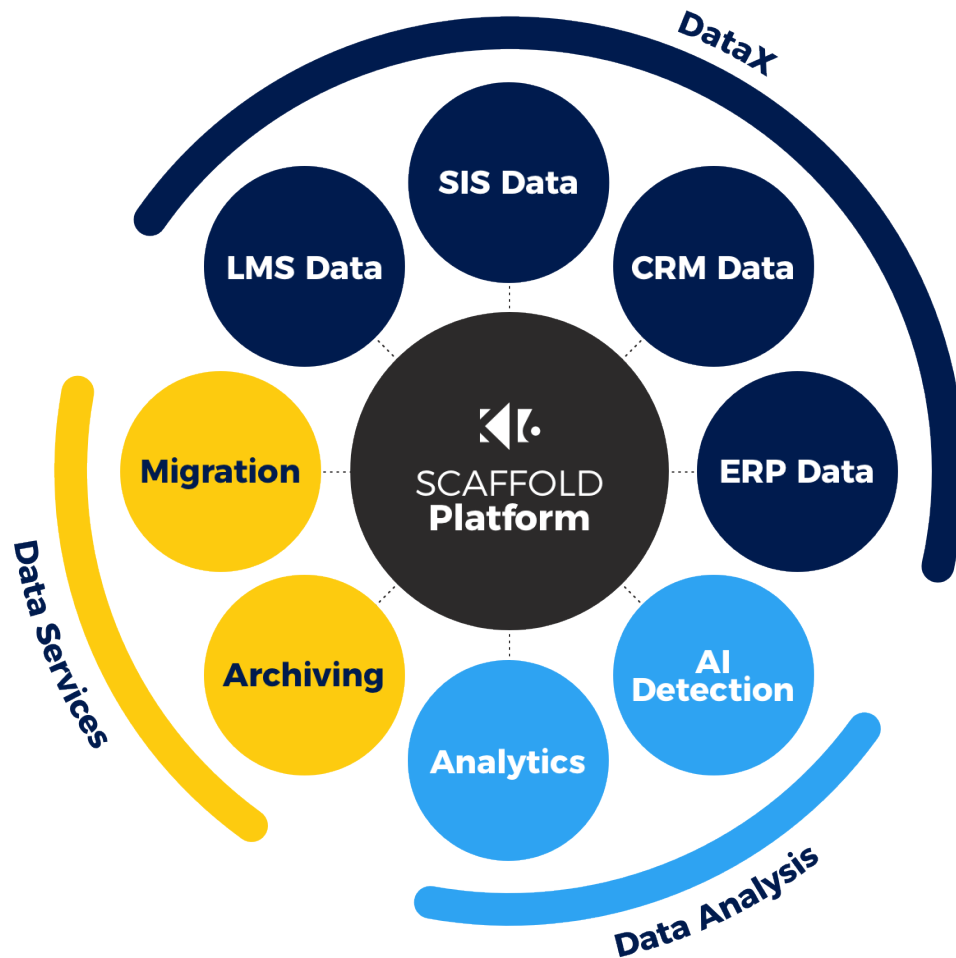
**6**

**Encourage faculty to use migrated content as a starting point**



**K16 SOLUTIONS**

# PRODUCTS & SERVICES OVERVIEW



## Scaffold Migration

Through automated content migration, Scaffold can migrate course content quicker than any other option on the market.

## Scaffold Archiving

Scaffold Archiving allows institutions to archive their course content and student data at a much lower cost than any other option.

## Scaffold DataX

Scaffold DataX gives you a 360-degree view of all the data in your enterprise systems by placing it in a neutral data model

# QUESTIONS?

[k16solutions.com](http://k16solutions.com)

# APPENDIX